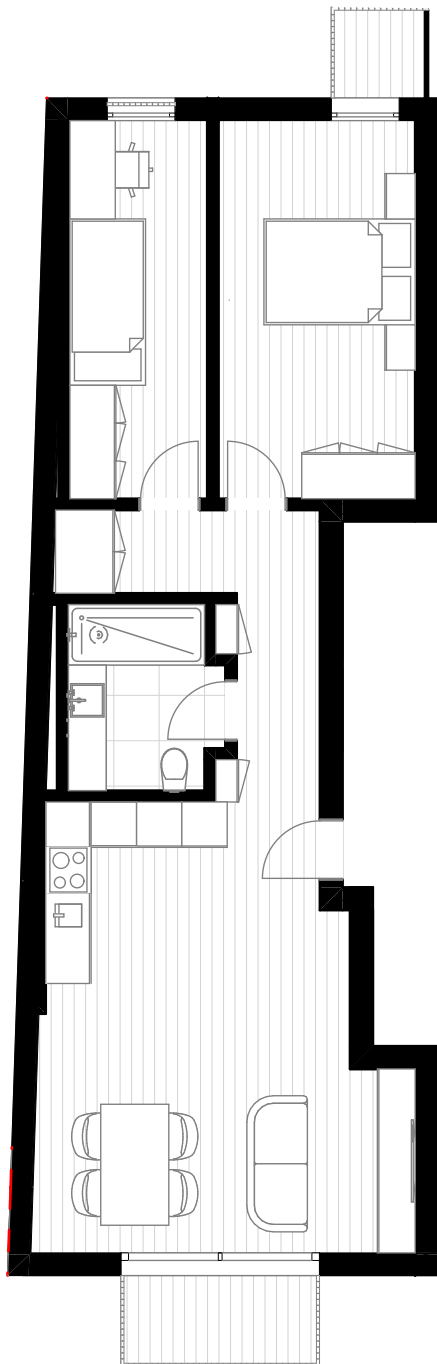


# MOBIN VISTA

— EDIFÍCIO GONÇALVES LAGE —



# T2

**FRAÇÃO B Piso 1**

Hall - 6,88m<sup>2</sup>

Sala - 26,10m<sup>2</sup>

Quarto - 13,00m<sup>2</sup>

Quarto - 9,08m<sup>2</sup>

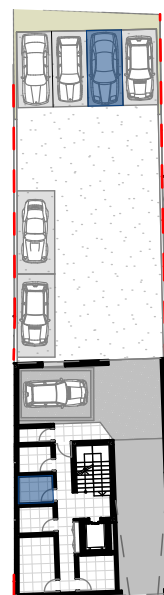
I.S. - 4,73m<sup>2</sup>

Varanda - 1,51m<sup>2</sup>/3,15m<sup>2</sup>

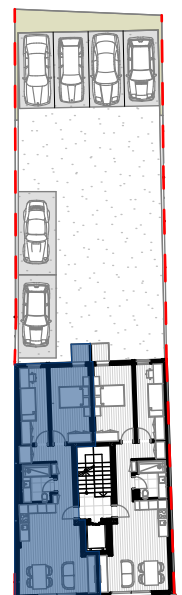
Lugar de garagem - 11,56m<sup>2</sup>

Arrumos - 4,12m<sup>2</sup>

Área Bruta - 82,20m<sup>2</sup>



Piso da cave



Piso 1