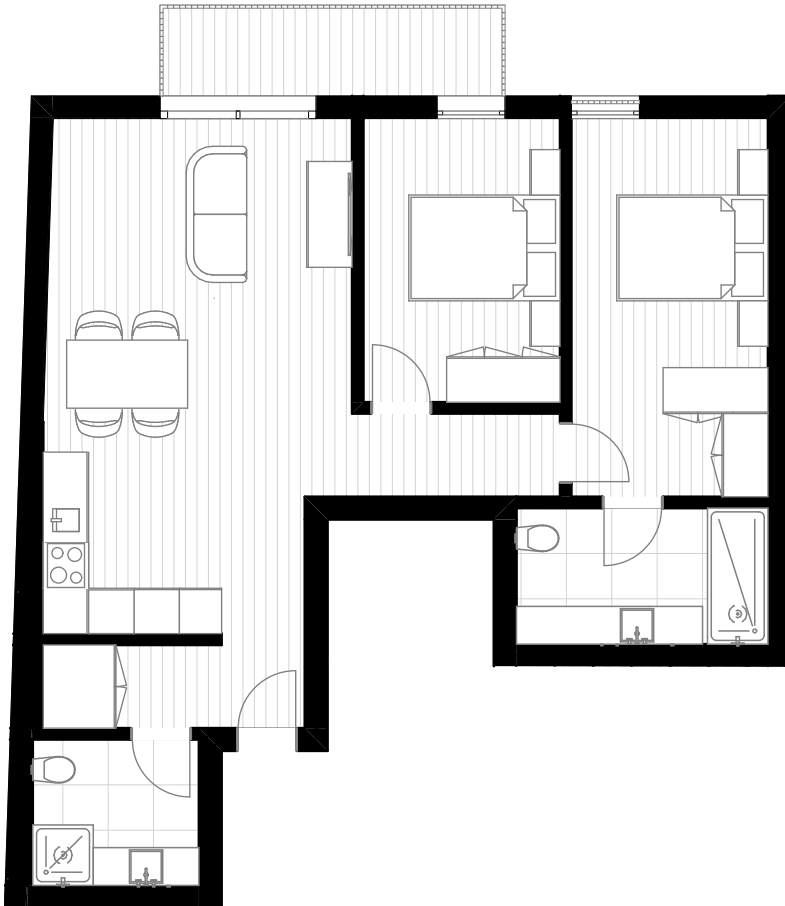


# MOBIN VISTA

EDIFÍCIO GONÇALVES LAGE



# T2

FRAÇÃO A Piso 0

Hall - 3,03m<sup>2</sup>

Sala - 31,01m<sup>2</sup>

Quarto - 9,75m<sup>2</sup>

Suite - 13,00m<sup>2</sup>

I.S. - 4,25m<sup>2</sup>

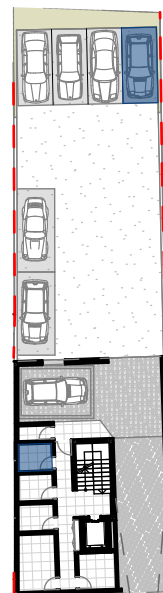
I.S. - 5,98m<sup>2</sup>

Varanda - 5,48m<sup>2</sup>

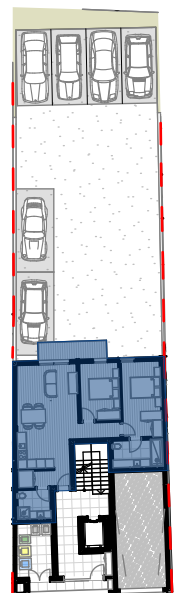
Lugar de garagem - 11,56m<sup>2</sup>

Arrumos - 4m<sup>2</sup>

Área Bruta - 82,64m<sup>2</sup>



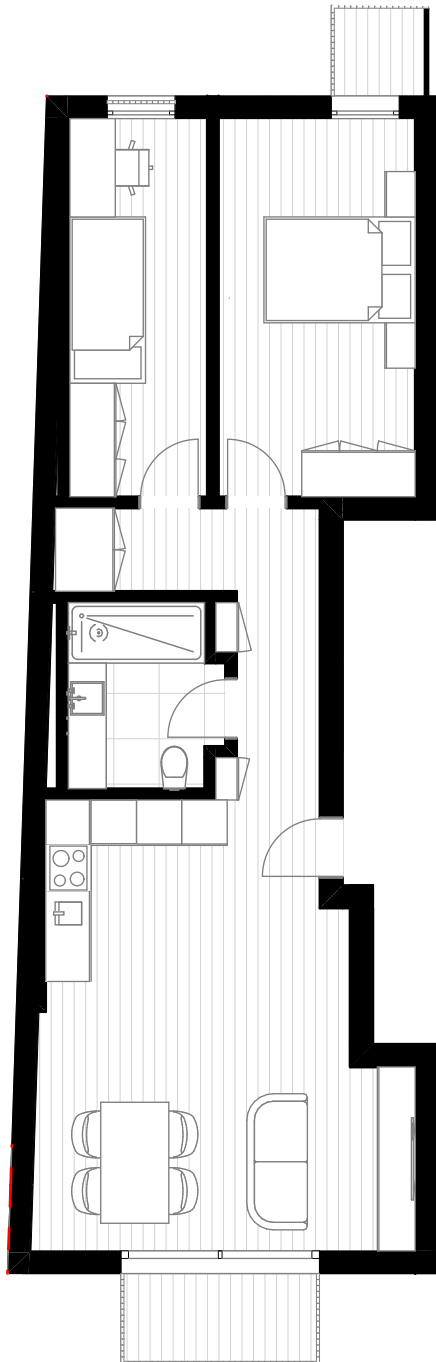
Piso da cave



Piso 0

# MOBIN VISTA

— EDIFÍCIO GONÇALVES LAGE —



# T2

**FRAÇÃO B Piso 1**

Hall - 6,88m<sup>2</sup>

Sala - 26,10m<sup>2</sup>

Quarto - 13,00m<sup>2</sup>

Quarto - 9,08m<sup>2</sup>

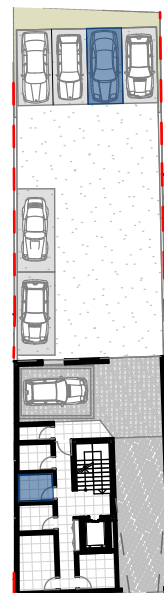
I.S. - 4,73m<sup>2</sup>

Varanda - 1,51m<sup>2</sup>/3,15m<sup>2</sup>

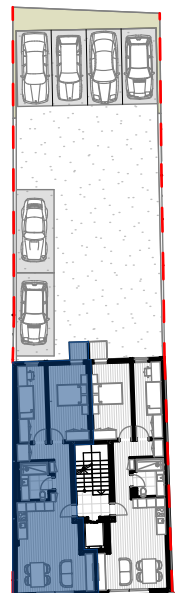
Lugar de garagem - 11,56m<sup>2</sup>

Arrumos - 4,12m<sup>2</sup>

Área Bruta - 82,20m<sup>2</sup>



Piso da cave

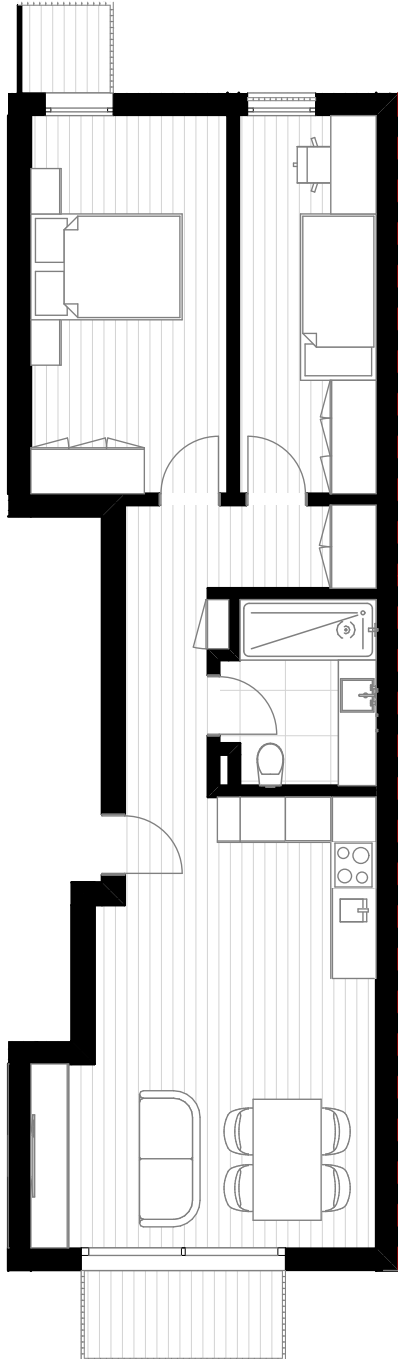


Piso 1



# MOBIN VISTA

EDIFÍCIO GONÇALVES LAGE



# T2

FRAÇÃO C Piso 1

Hall - 6,69m<sup>2</sup>

Sala - 23,68m<sup>2</sup>

Quarto - 13,00m<sup>2</sup>

Quarto - 9,08m<sup>2</sup>

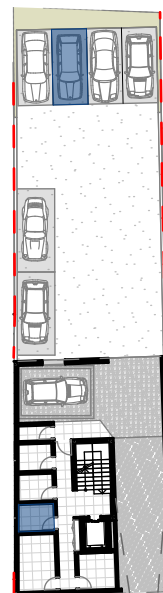
I.S. - 4,73m<sup>2</sup>

Varanda - 1,51m<sup>2</sup>/3,22m<sup>2</sup>

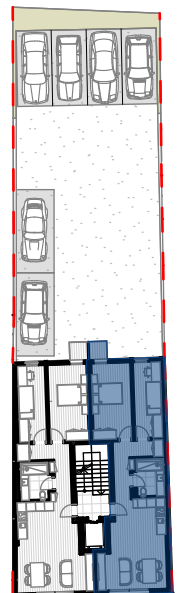
Lugar de garagem - 11,56m<sup>2</sup>

Arrumos - 4,23m<sup>2</sup>

Área Bruta - 78,10m<sup>2</sup>



Piso da cave

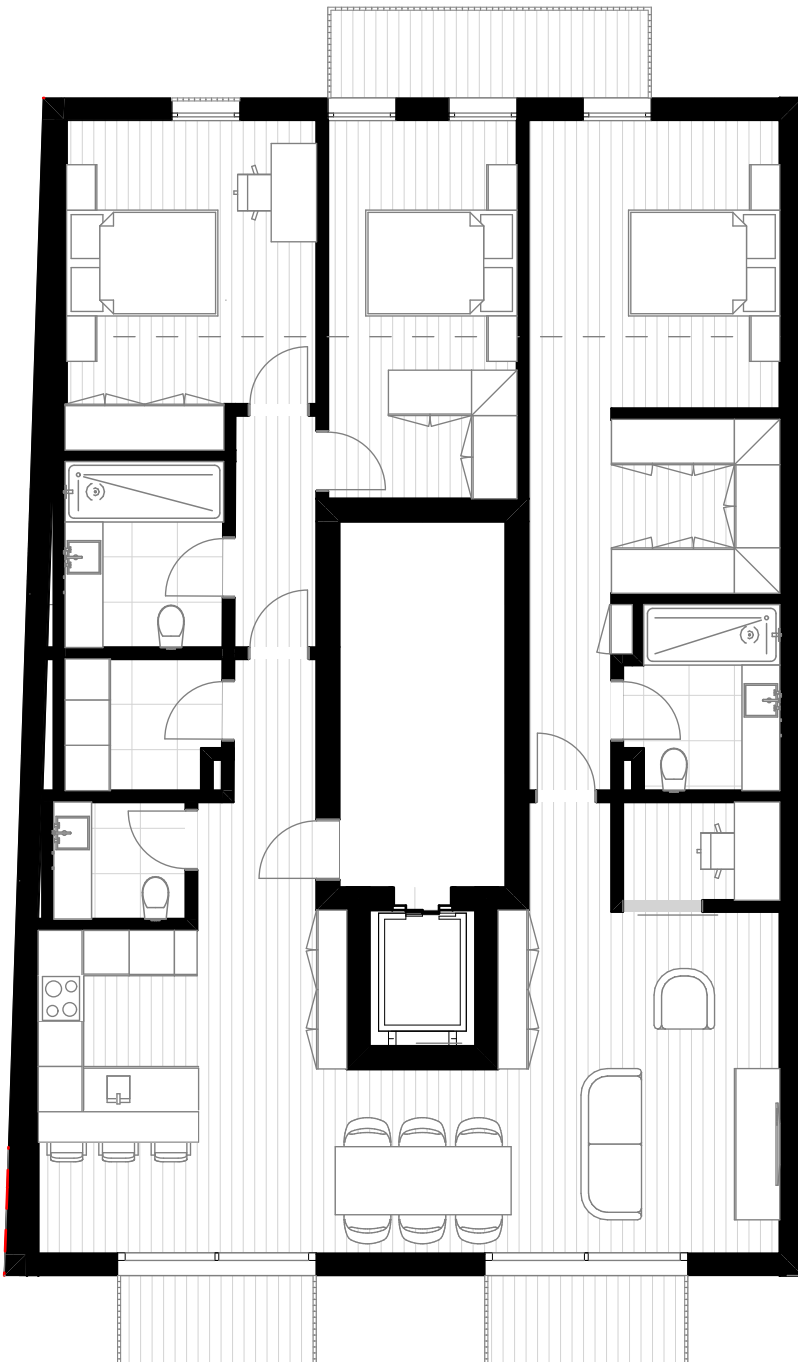


Piso 1



# MOBIN VISTA

EDIFÍCIO GONÇALVES LAGE



# T3

**FRAÇÃO D Piso 2**

Hall - 5,56m<sup>2</sup>

Sala - 46,76m<sup>2</sup>

Quarto - 13,66m<sup>2</sup>

Quarto - 12,57m<sup>2</sup>

Suite - 23,83m<sup>2</sup>

I.S. - 4,73m<sup>2</sup>

I.S. - 5,14m<sup>2</sup>

I.S. - 2,7m<sup>2</sup>

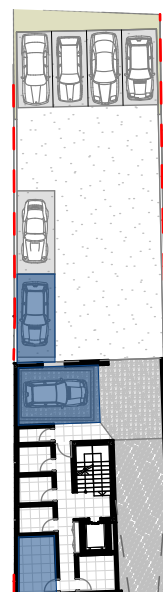
Lavandaria - 3,46m<sup>2</sup>

Varanda - 3,15m<sup>2</sup>/3,22m<sup>2</sup>5,13m<sup>2</sup>

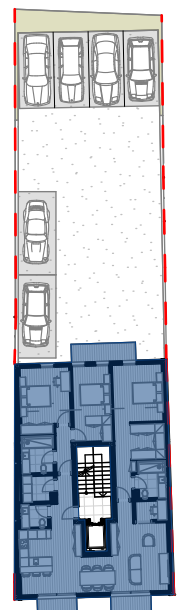
Lugar de garagem - 34,85m<sup>2</sup>

Arrumos - 9,31m<sup>2</sup>

Área Bruta - 141,30m<sup>2</sup>



Piso da cave



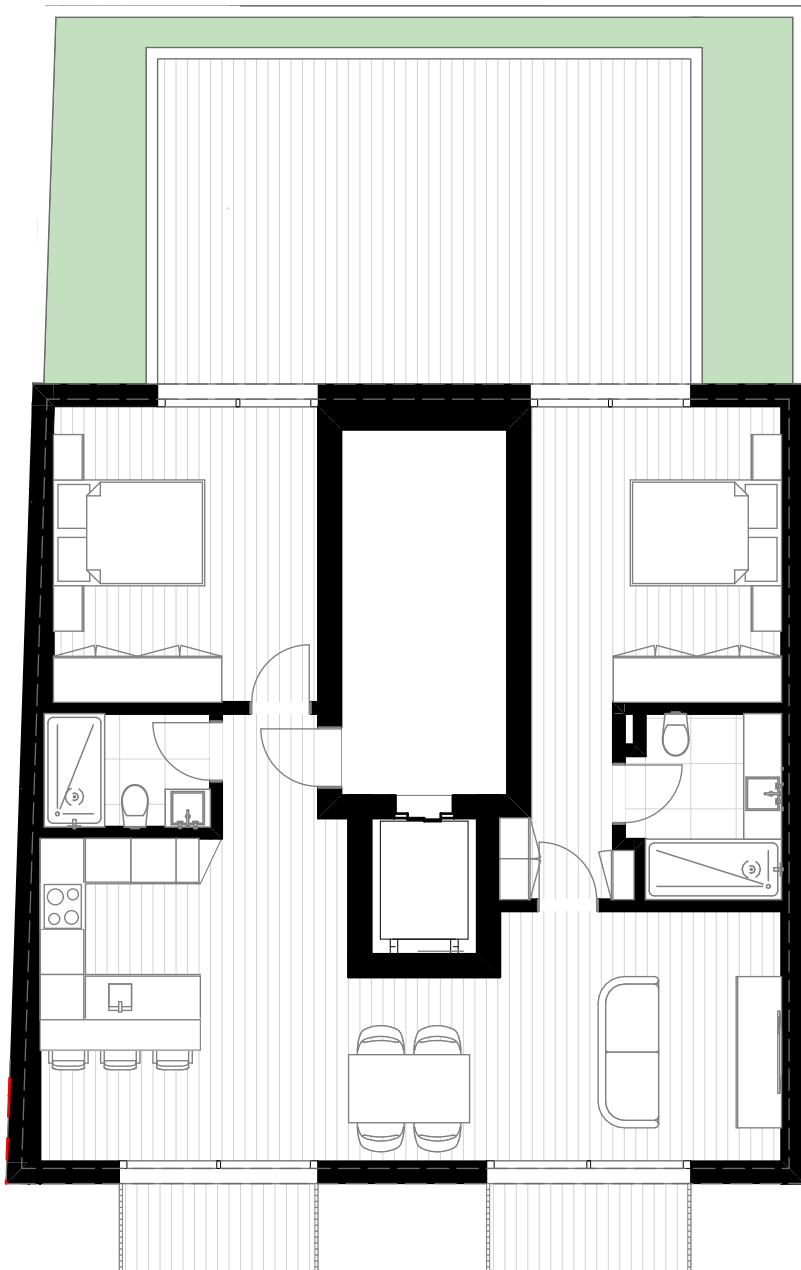
Piso 2

# MOBINVISTA

EDIFÍCIO GONÇALVES LAGE

# T2

FRAÇÃO E Piso 3



Pátio - 30,32m<sup>2</sup>

Sala - 36,79m<sup>2</sup>

Quarto - 13,69m<sup>2</sup>

Suite - 15,12m<sup>2</sup>

I.S. - 3,34m<sup>2</sup>

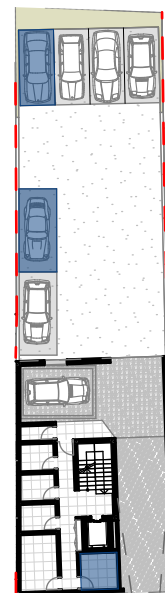
I.S. - 4,73m<sup>2</sup>

Varanda - 3,15m<sup>2</sup>/3,22m<sup>2</sup>

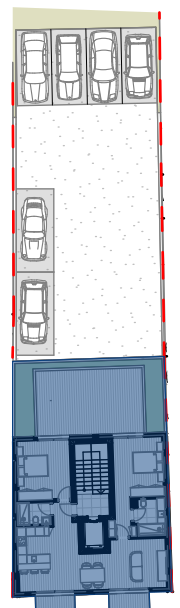
Lugar de garagem - 25,31m<sup>2</sup>

Arrumos - 6,17m<sup>2</sup>

Área Bruta - 109,72m<sup>2</sup>



Piso da cave



Piso 3